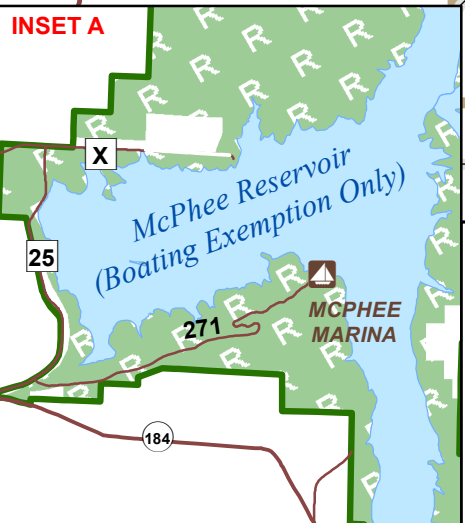
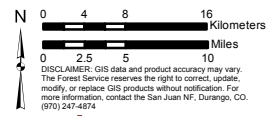
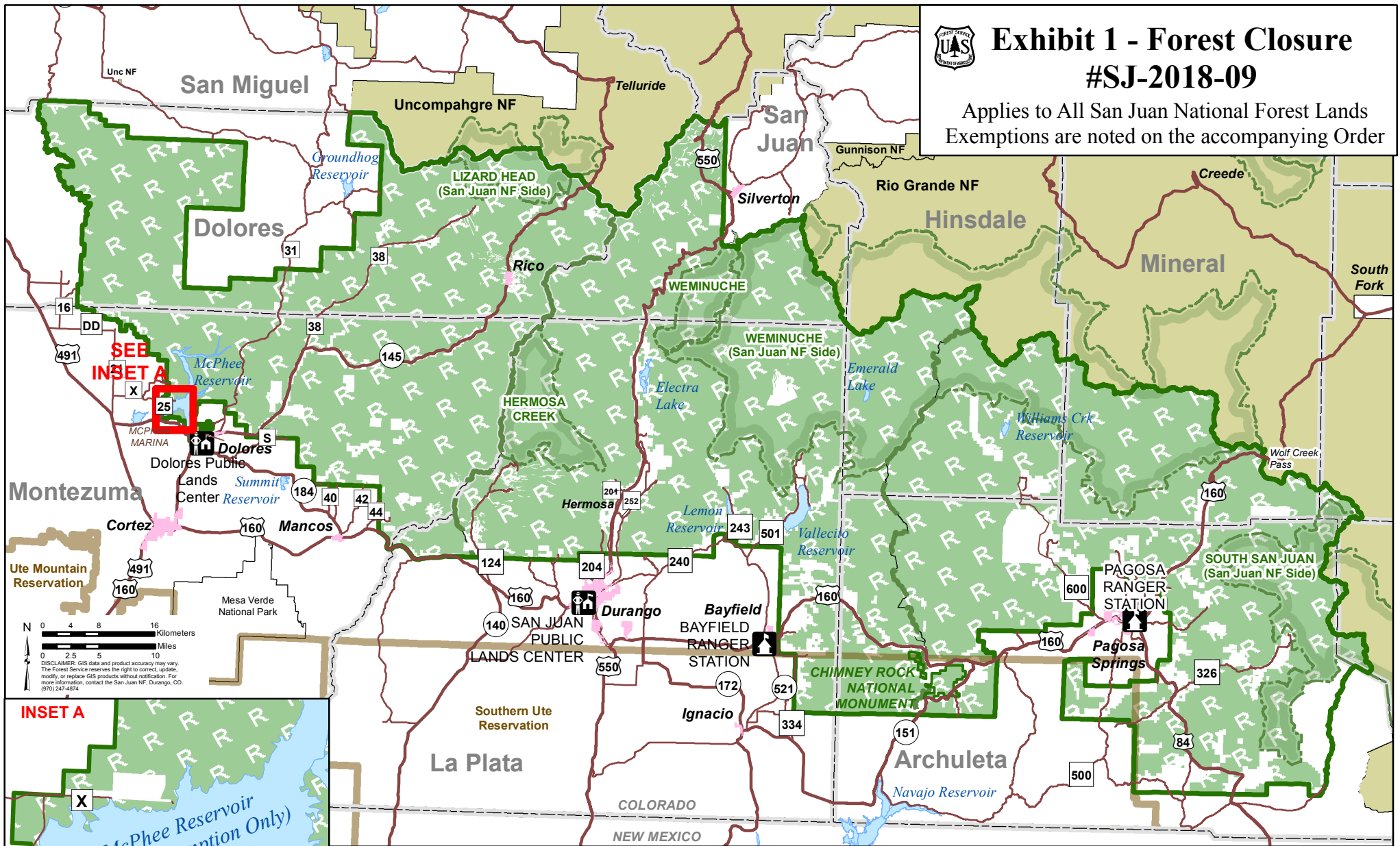




Exhibit 1 - Forest Closure #SJ-2018-09

Applies to All San Juan National Forest Lands
Exemptions are noted on the accompanying Order



Legend

	Public Lands Center		McPhee Marina		Forest Boundary
	Ranger District Office		Road		Ranger District Division
	271 National Forest System Road		County Boundary		Wilderness
	250 County Road		Major Water Body		San Juan National Forest Lands Under Stage 3 Forest Closure Restriction
	160 US Highway		Municipality		Adjacent National Forest Not Affected by this Closure Order
	151 State Highway		National Monument		Non-National Forest Land (white)

